

. ,2016 .

,
,
,
2015 ,
:
.
1.
2015 .
20 ,, 4,
- 3 , -
117/14.04.2015 .
14.04.2015 . 403/08.10.2015 .
, 15 2015 ,,
-
15.02.2015 . , 5
05.02.2015 .
17 , 9
“ 17 ”
12
28 , ” “
17
18 , ” “
8
16 . ” “
117/14.04.2015 . 403/08.10.2015 .
,
2/20.01.2016 .
,
,
,
,
- ,

, , , - , .
 , , , .
 , , , .
 , - - 1 ,
 , , 24
 , - 1 , 9
 , .
 , , .
 , .
 : - 50%
 50% 100%, ,
 100%, ,
 . 2015 - 14
 , :
 - 1, ”
 ;
 - 1;
 - 1;
 - 4;
 - 2;
 - 1;
 - 1;
 - 1;
 - 1;
 - 1.

2015

2015 .

”

“

，

，

·

，

·

，

，

·

，

，

，

·

，

-

2015 .

—

·

，

·

，

·

·

·

，

，

·

，

·

，

，

，

·

·

，

2015 .

，

·

()

2015 .

3.5

2.33

，

2014 .，

，
- 4.07

：

，

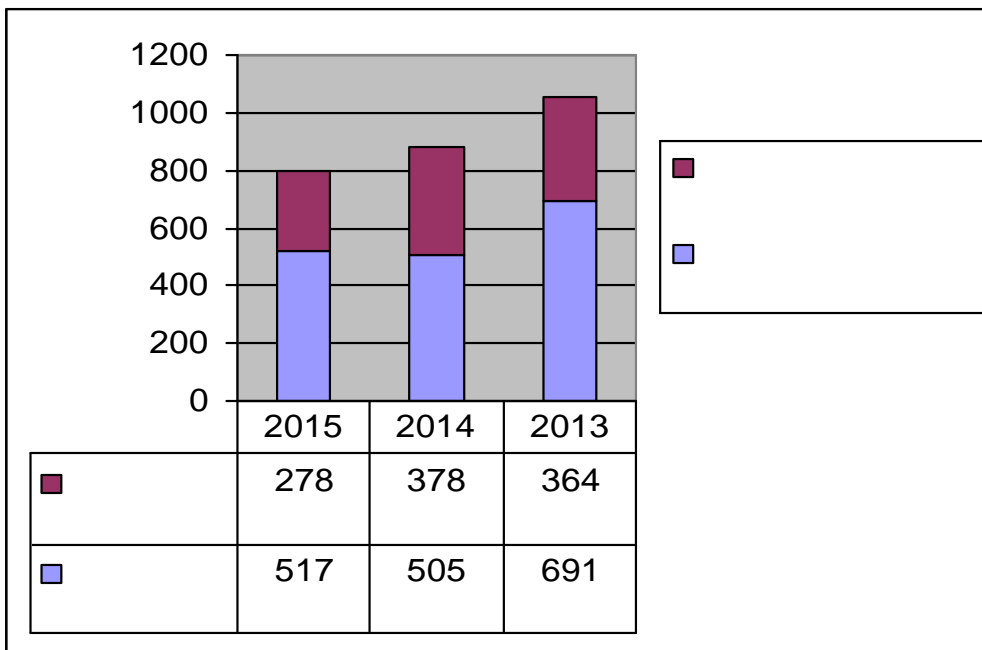
2.58. , -

30 , 15 ,

1. 31.12.2015 .

1 ,
3/21.01.2009 .

795 , 517 278



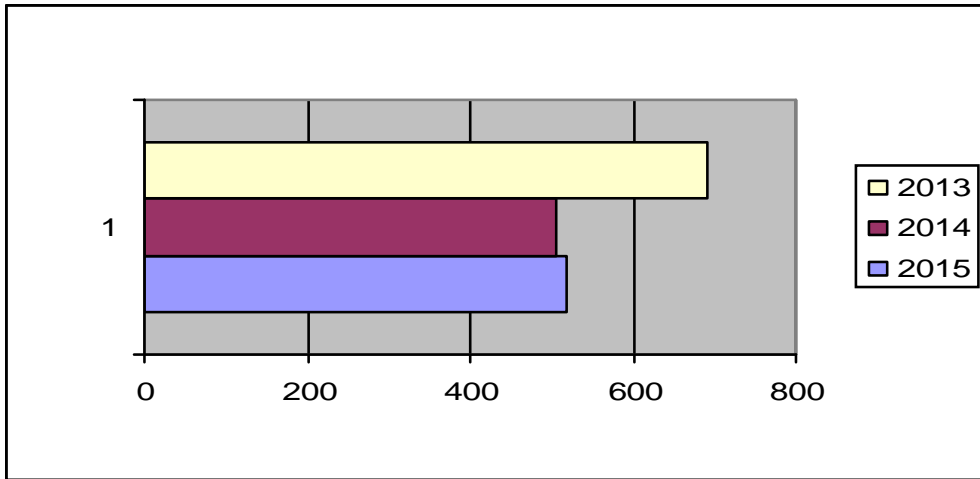
2. 31.12.2015 .
795 , 721 . , 74 .
2014 .

9% , - 90% .
635 , 89%

2015 . 459 . ,
432 . , 27 .

88%.

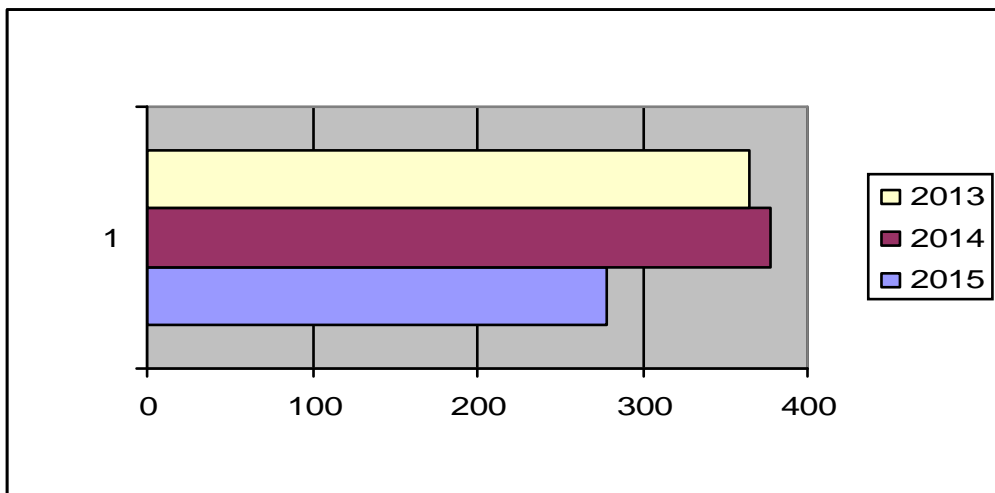
11%,



2015 . 262 ..
2014 16 .

5,8%,

94%.



1. 31.12.2015 .
2015 278 . 16
2014 262 .

		1	2	.			6	7	8
				3	4	5			
	0200	2	0	0	0	0	0	0	2
. . .159 .2,3 5	0201							0	0
- .159 -159	0202							0	0
- .129	0204							0	0
. . .142	0205							0	0
- .149 150 / .149, .5	0206							0	0
/ - .152 / .152, .4	0207							0	0
- .155	0208							0	0
- .156	0209							0	0
. . . -	0300							0	0
. . . - .172 -173 .1	0301							0	0
. V - -	0400	0	4	0	4	0	0	4	4
. V -	0500	3	24	0	24	2	0	24	27
. . - .194-197 / .196	0501	2	19	0	19	2	0	19	21
/ - .198 .200	0505							0	0
- .201-208 / .203	0506							0	0
.206, 4/	0507	1	4	0	4	0	0	4	5
- .209-211	0511							0	0
- .212/	0512							0	0
.212, 5/, 212 ,212	0514							0	0
- .213	0600	0	14	0	14	3	0	14	14
. / / .213 /1,2/, 214/1/ 214	0604	0	5	0	5	3	0	5	5
. V -	0606							0	0
. V -	0700							0	0
. V -	0800	1	37	0	36	8	0	37	38
. . . .279	0802	0	33	0	33	8	0	33	33

.280	0803	1	2	0	1	0	0	2	3
	0900	0	1	0	1	0	0	1	1
	1000							0	0
- .325	1005							0	0
	1100	0	23	0	22	5	0	23	23
- .343 .1 ." ", .3 ." "	1103	0	17	0	17	3	0	17	17
- .346	1106							0	0
.1 . - .354, 354 .5, 354	1107	0	1	0	1	0	0	1	1
	1200							0	0
	1250							0	0
. V -	1300							0	0
.0200 .1300	1399	6	103	0	101	18	0	103	109
	1400	1	3	0	3	0	0	3	4
.78	1410	1	7	0	7	0	0	7	8
	1430							0	0
- .80-84	1440							0	0
.85-88	1450	0	2	0	2	0	0	2	2
.89	1460	0	3	0	3	0	0	3	3
- .23, 25 27	1470	0	4	0	4	0	0	4	4
	1480	0	74	0	74	0	0	74	74
	1490	0	31	0	31	0	0	31	31
/ .1430 .1490/		0	114	0	114	0	0	114	114

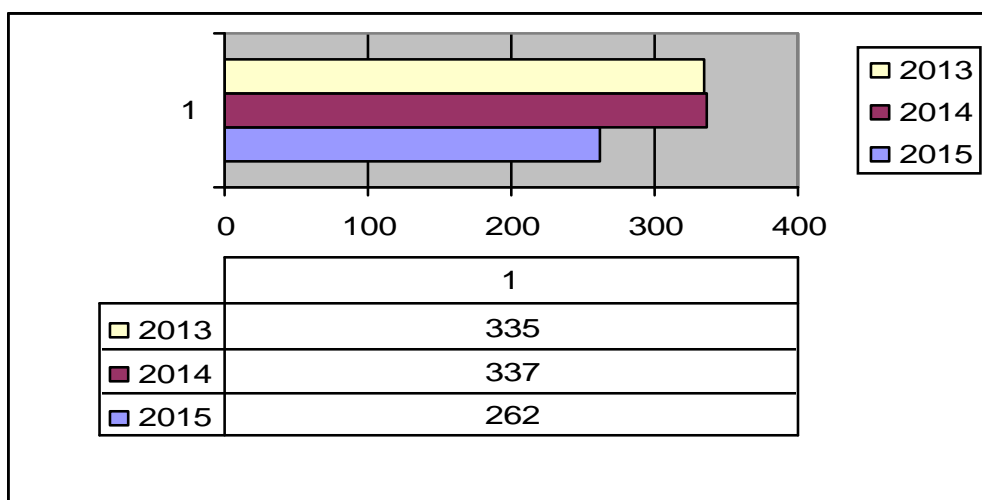
2015 75 . -
2014
31.12.2015 , 24 . 2014
16 . ,

2015

2.

2015 103 , 111
2014 ., 116 2013 .,

2015 V – 24
 , 2014 . – 24 ., 2013 . – 37 .
 : 2013 . 31 .,
 2014 . 23 2015 . 23 .
 V II , :
 V 14 .; 2014 . 10 . II – 0
 2015 ; 2014 . 3 .
 2015 – 103 . 39%,
 2015
 3, 2014 . 2 . 2013 . 5 .
 78 , 2013 16 ., 2014 14 .
 2015 5 .
 , 2015 114 ,
 2014 , 180 .
 2015 . – 3 .; 2014 . – 3 5 . 2013 .
 2013 9 .,
 2014 . 13 ., 2015 . 4 .
 44%, 53%
 2014 . 45% 2013 .
 – 35 .,
 2014 . – 30 . 13%



3. 2015 . 254
 278 91%
 , . . .
 . 2014 . 378 ., 362 .
 - 96%
 .
 2015 .

	2	2
. . . .159 .2,3 5	0	0
- .159 -159	0	0
- .129	0	0
. . . .142	0	0
- .149 150 / .149, .5 /	0	0
- .152 / .152, .4 /	0	0
- .155	0	0
- .156	0	0
. . . -	0	0
. . - . . - .172 -173 .1	0	0
. V - - , .	4	3
. V -	27	21
. . - .194-197 / .196 /	21	17
- .198 .200	0	0
.206, 4/ - .201-208 / .203	0	0
- .209-211	5	3
212 , 212 - .212/ .212, 5/	0	0
- .213	0	0
./ / .213 /1,2/, 214/1/ 214	0	0
. V .	14	14
- . . - .228 .240	5	5
- / . . .227 227	0	0
. V - - " . . .	0	0
. V - - . . .	38	38
. . . .279	33	33
. . . .280	3	3

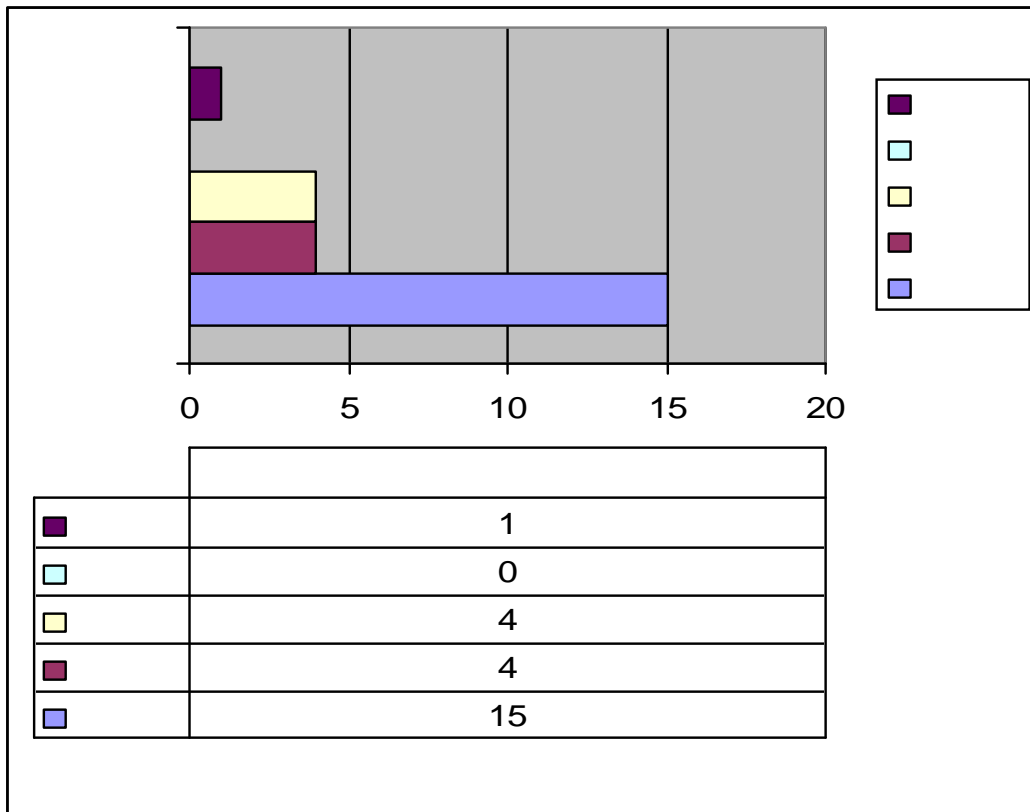
.	1	1
.	0	0
- . 325	0	0
.	23	15
- . 343 .1 ." ", .3 ." "	17	9
- . 346	0	0
. - . 354, 354 .5, 354 .1	1	1
.	0	0
. V -	0	0
	4	0
. 78	8	7
	114	114
	0	0
- .80-84	0	0
. 85-88	2	2
. .89	3	3
- . 23, 25 27	4	4
	74	74
	31	31
	43	39
	109	94

2015 . 114 . 45% .
114 , 74 . , -
, , , 40 . 2014 , 180 .
50% , 156 .
, - , ,
24 . 2015 , 41 .
39 ., 15% .

() 94 .,
 37%
 (), 7 .,
 3%
 4. .
 172 ,76 6
 2 . -
 94 . ,
 , ,
 V 2015 . 21, 29 2014 .
 XI -
 , 15, 23 2014 .
 - 1 , 2014 .
 II -
 , 2 ., 2014 . 2 .
 V - 14
 , 2014 . 12 .
 () 2015 .,
 7 , 2014 .- 19 .
 () 38
 , 32 2014 .
 (), 2014 .
 , 2014 . . ,
 5. -
 82
 , 111 2014 . 2015 . 76 .,
 95 . 2014 ., 76
 - 2014 .
 91 . 76 . ,
 , 59 . , 17 .
 2015 . - , 2014
 .
 2015 . 1 ., 2014 . 3
 : ,

6. – 31.12.2015 . ()
2015

. 24 . 16 . 2014 . 41 2013 .



– 4 ., 2015 ., – 1 ., – 15 ., – 4 .,

7. 2014 . 16 .

2015 . „ 3 ” 222 .
87% . -
2015 . 3- . – 114 . – 100%, –
3 ., 83 .,
78 – 88% ., 3- 6 .

86%

26 .. 19 74% 49% 2014 .

3 2015 32

12% -13%.

8.

2015 . / 38 .

. - , 9 . 3 . 2014 . : 19

/ 47 . , 31 .

, 10 . 5 . 2013 .

/ 46 . , 31 .

, 12 . 3 .

2015 .

/ 56%, 26%

9%. 2014 .

/ 66%, 21%

11%.

/ 66%, 26%

7%.

2015 .

- -23 .

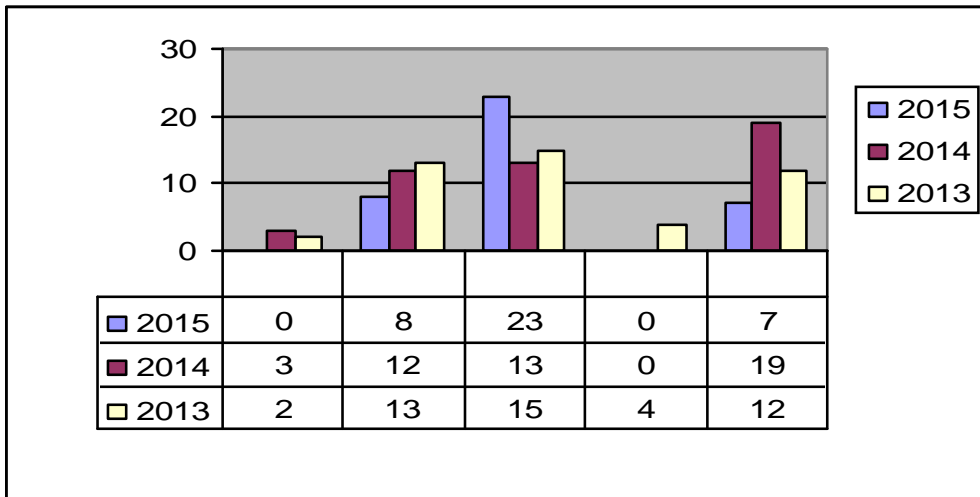
2015 .. () - 8 . - V -

: 2015 . - 3 ., 2014 . 7 .

2013 . - 3 . 37% 2015 , 58% 2014 . 23% 2013 .

- 7 ,

-3 , -3 . 1 .



9. , .

2015 . 1 ., 2014 . 2 ., 2013 . 2 .
2015 .

. 195, . 1, . 2 . 4,
. 194, . 1, . 26, . 1 ,

2014 . , 2013 .

, 2015 . 1 ., 2014 . - 2 .

2013 . 2 . 2015 . ,

2014 . 1 . 2013 . 1 . 2014 .

1 . 1 . 2013 . 2015 . ,

2014 . 1 . 2013 . .

10.

2014 . 191 ., 2013 . - 166 . 2015 . 106,
2012 . - 131 .

. 78

7 .

, , 2015

, -

,

.

10.1 -

.II			
2013 .	7	7	0

2014 .	4	2	0
2015	2	2	0
.III			
2013 .	0	0	0
2014 .	0	0	0
2015 .	0	0	0
.IV.-			
2013 .	2	2	0
2014 .	4	2	2
2015 .	3	3	0
.V-			
2013 .	58	58	0
2014 .	62	62	0
2015 .	32	31	1
.VI-			
2013 .	17	17	0
2014 .	13	13	0
2015 .	15	15	0
.VII			
2013 .	0	0	0
2014 .	1	1	0
2015 .	0	0	0
.VIII			
2013 .	43	43	0
2014	91	87	0
2015 .	40	39	0
.I -			
2013 .	2	2	0

2014 .	0	0	0
2015 .	1	1	0
. -			
2013 .	3	1	2
2014 .	1	1	0
2015 .	0	0	0
. I -			
2013 .	32	32	0
2014 .	23	23	0
2015	15	15	0
. II			
2013 .	0	0	0
2014 .	0	0	0
2015 .	0	0	0
. IV			
2013 .	0	0	0
2014 .	0	0	0
2015 .	0	0	0
2013 .	6	4	1
2014 .	5	0	1
2015 .	0	0	0
:			
2013 .	170	166	3
2014 .	204	191	3
2015 .	108	106	1

, 2015 . -
 ,
 V ,
 V ,
 , 2013
 ,
 - . V ,
 2014 ., 2015 .
 .
 „ .

10.2. 2015 . 13 ., 12 .

2015 . 2014 .,

2015 -2 ., 11 . 2014 ., 10 . 2013 .

154 . 2014 . -86 ,

4 . 2013 . 5 . 2014 .

10.3. 2015 . 101 .,

109 6 .

2 .

- 18 ., 76 .

2014 . 110 .,

130 ., 19 .

1 .,

- 29 ., 91 .

2013 .

113 .,

127 . 19 .

3 .,

24 ., 82 .

93%

2015 .

				-
	0	2	2	0

	0	0	0	0
. V - - ,	4	4	3	0
. V	24	27	21	1
. V	14	14	14	0
. V - - ,, .	0	0	0	0
. V - - -	36	38	38	0
.	1	1	1	0
.	0	0	0	0
.	22	23	15	0
.	0	0	0	0
. V -	0	0	0	0
	101	109	94	1

11. 2015 2013 , 2014 .

	2013 .	2014 .	2015 .
	29	41	16
	335	337	262
	364	378	278
	323	362	254
3	297	332	222
	235	251	172
	88	111	82
/	46	47	38
:	31	31	19
	12	10	9
	3	5	3
	0	0	0
	41	16	24

2015 . , , ,
 2014 . 2015 . , - 2015 , 2013 .
 1. 31.12.2015 .
 2015 - 517
 194 . 2015
 :

	1	2	3	4 (2+3)	5 / . 1+3/
	0	34	0	34	34
..	0	10	0	10	10
	0	9	0	9	9
	0	2	0	2	2
	0	1	0	1	1
	18	43	0	43	61
... /	1	0	0	0	1
	7	13	0	13	20
..	1	1	0	1	2
	17	6	0	6	23
	0	0	0	0	0
.. .200	0	0	0	0	0
	0	0	0	0	0
	12	38	4	42	54
..	0	7	0	7	7
	0	0	0	0	0
.26-	0	2	0	2	2
.30-	0	7	1	8	8
-	12	22	3	25	37
:	54	134	4	138	192

	0	1	0	1	1
..	0	0	0	0	0
:	54	135	4	139	193

(141),
31%.

2. 31.12.2015 .
2015 . 321
4 . 317

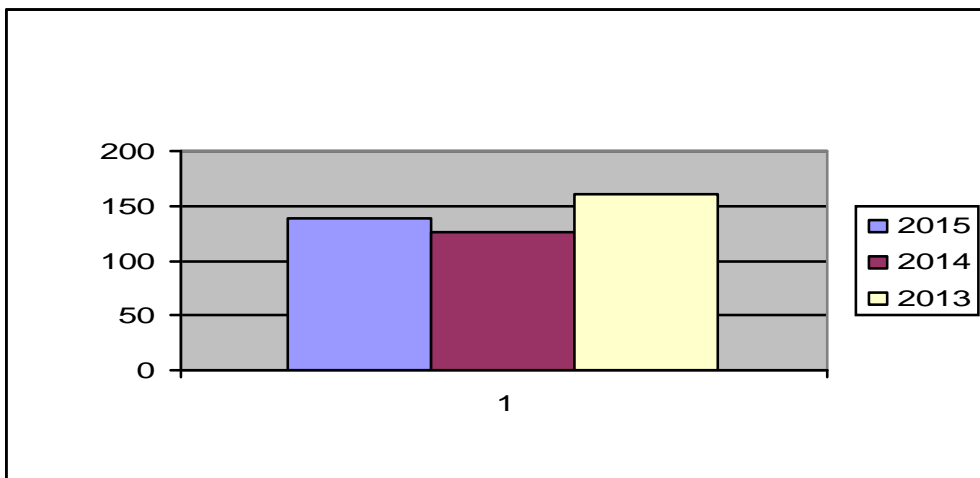
	1	2	3	4	5
.410 .417	1	244	20	264	265
.29, .4 / ; .52 .61 / .390 ;	3	50	3	53	56
:	4	297	23	320	321

.410 .417 69%.
57%

3.

	2014	2015	2014	2013
	0	34	21	33
..	0	10	3	8
	0	9	8	7
	0	2	3	5
	0	1	1	4

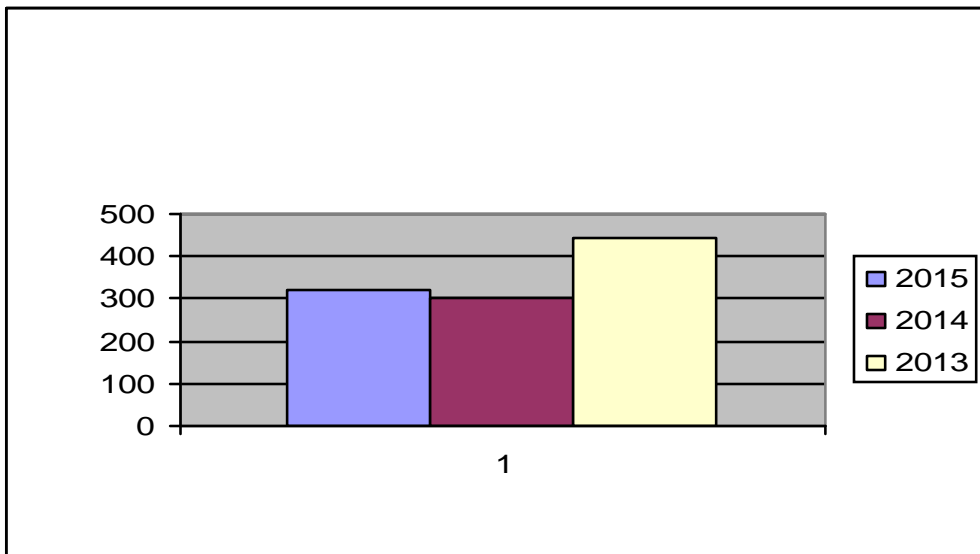
	18	43	43	39
..	1	0	2	3
	7	13	11	11
..	1	1	1	2
	17	6	11	12
	0	0	1	1
..	0	0	1	1
	0	0	0	0
	0	0	0	0
	12	42	37	60
..	0	7	5	3
	0	0	0	0
.26-	0	2	7	11
.30-	0	8	3	3
	12	25	22	43
:	54	138	124	156
	0	1	2	4
..	0	0	0	0
:	54	139	126	160



:

	2014	2015	2014	2013
.417				
.410				
.-	1	264	244	418

/ .390 ; .29, .4 ; . 52 .61				
/	3	56	57	27
:	4	320	301	445



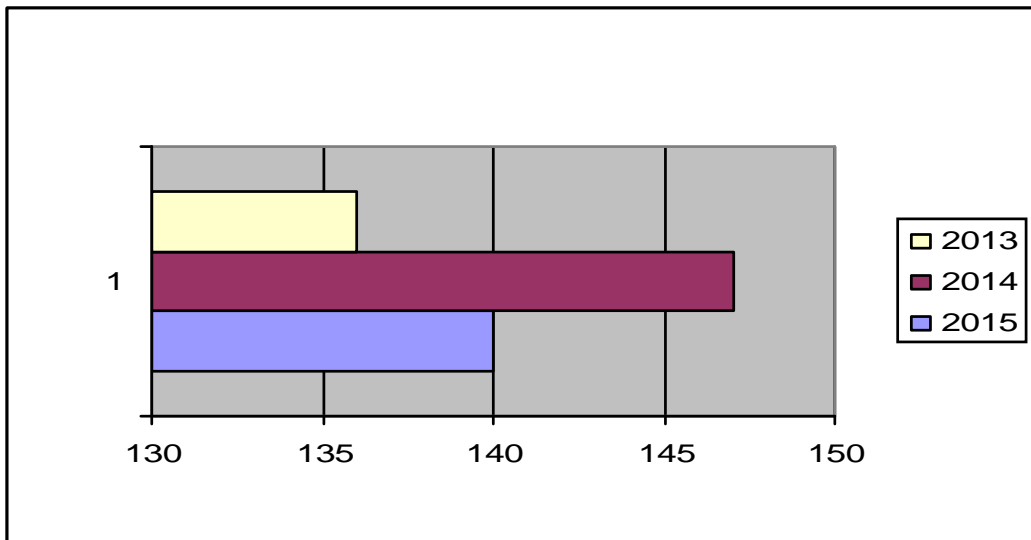
4. .417 (.410 57%)
.124, .415-422
, 2015 . 16
13 . 2014 .
31.12.2015 .
2015 457,
390 ;
64 ., .234 -3 .

	2015 .
	27
..	7
	9
	1
	1
	46
.. /	1
	14
..	2
	12
	0
.. .200	0
	0
	0
	40
..	6
	0
.26-	1
.30-	8
	25
:	139
	1
..	0
:	140
	2015
.410 .417 . -	265
.52 .61 / .390 ; .29, .4 ;	52
:	317

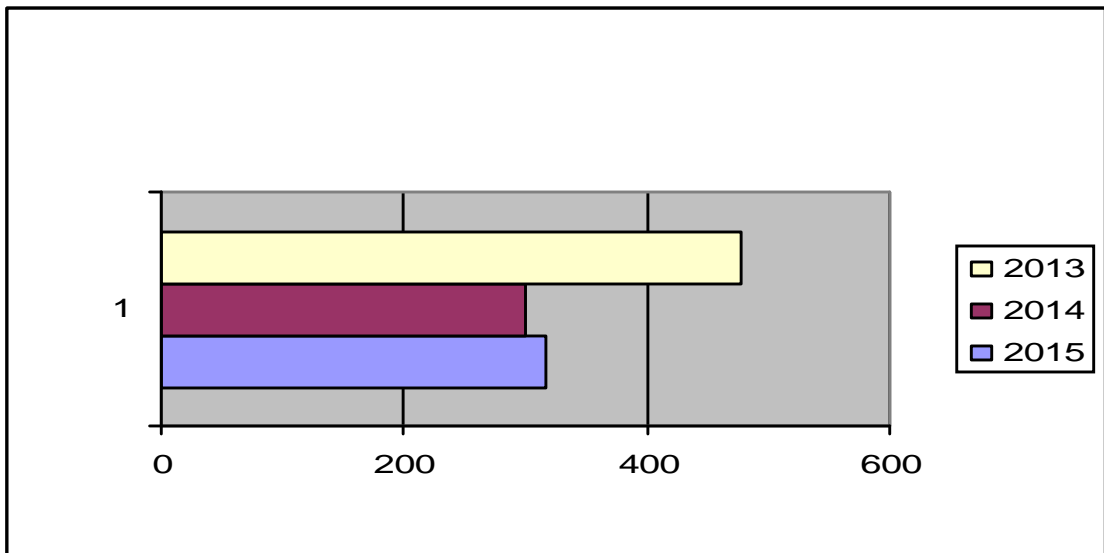
5. 2013 ., 2014 ., 2015 .
:

	2015	2014	2013
	27	27	37
..	7	4	12
	9	9	7

	1	4	5
	1	1	6
	46	45	49
...	1	4	0
/	14	12	9
..	2	2	2
	12	15	12
	0	2	1
...	0	2	0
.200	0	0	0
	0	0	0
	0	0	0
	40	44	21
...	6	5	3
	0	0	0
.26-	1	7	14
.30-	8	3	4
	25	29	0
:	139	145	129
	1	2	7
...	0	0	0
:	140	147	136



	2015	2014	2013
.410 .417 . -	265	243	419
/ .390 ; .29, .4 ; .52 .61 /	52	54	59
:	317	301	478



457 ., 517 ., 88,5%, 2015 -
2014 . 88,7%.
6. -
410 .417 - 259 ., 265 .
98%.

2015 .

2014 ., 25 ., 61 ., 41%.

2014 ., 29 ., 63 ., 46%.

2014 ., 16 ., 20 ., 15 ., 21 ., 2014 .

2014 ., 34 ., 68% ., 2014 ., 23 ., 27 .

63% ., 17 ., 2015 .

2014 ., 2015 ., 2014 .

113

68 ., . . 60%.

2014 ., 116 ., 2015 .

24 ., 82 ., . . 71%.

2014 ., 20 ., 20 ., 8 ., 40%

2014 ., 19 ., 7 ., -36%.

2015 ., 23 ., 6 ., -26% ., : 32 .

2014 ., 10 ., . . 31%

2015 ., 2014 . (2014 .)

. 11 ., 2015 . - 6 ., 2014 .

2015 ., 1 ., 2 ., 390 ., () 2015 .

390 ., 85% 2014 ., 390 -

85%.,

2015 . 92 ., 2014 . 100 ., 20%, 22% 2%

7.

-

67, 3

- . 234 ,

64

- , : 2015 .

7

- , /

, 6 .

.232 .233 . 2015 . 4 ;

- ; ;

-15 ;

- , ; .-3 .,

- (.-8 .

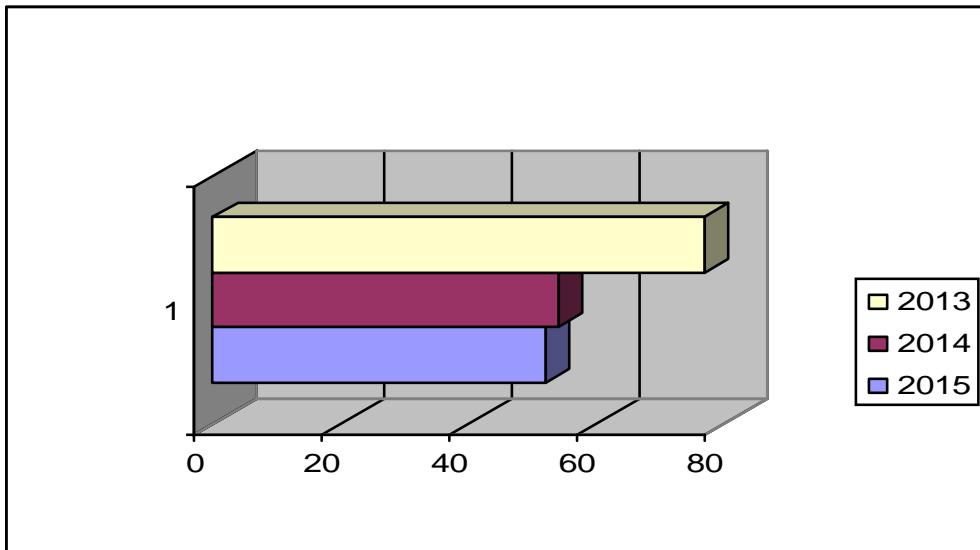
8.

() 2015 (.-8 .) 58 ., 60 2014 . 118 ., -

73 .

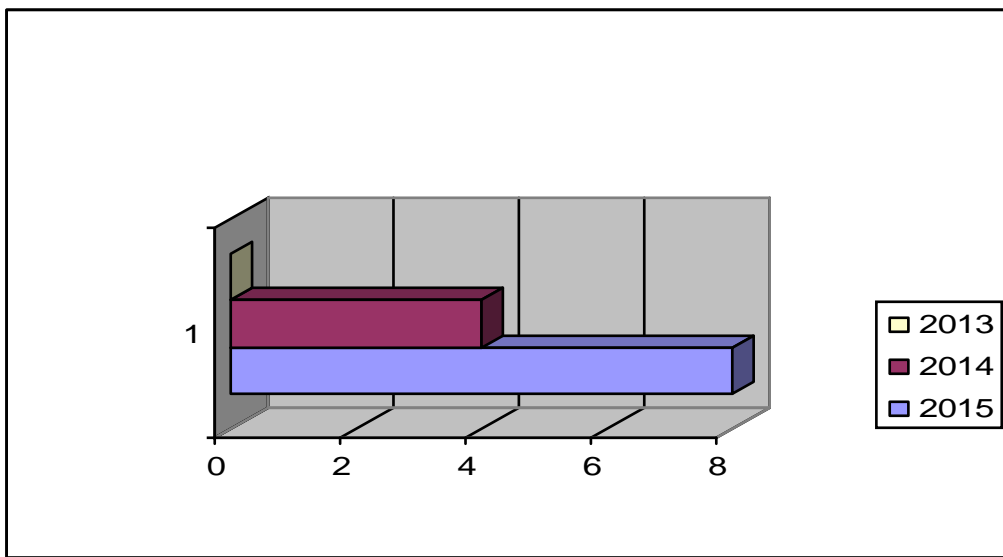
	2015	2014	2013
	7	0	6
..	3	0	1
	0	0	1
	1	0	1

	0	0	0
	15	18	20
...	0	1	3
/	6	7	8
..	0	1	2
	11	17	20
	0	0	1
...	0	0	1
.200	0	0	0
	0	0	0
	0	0	0
	13	12	22
..	1	0	0
	0	0	0
.26-	1	0	0
.30-	0	0	0
	11	12	22
:	0	54	77
	0	0	0
..	0	0	0
:	52	54	77



2013 ., 2014 . 2015 .
2014 . 2015 .
, 2013 .

	2015	2014	2013
.410 .417 . -	0	1	0
/ .390 ; .29, .4 ; .52 .61 /	8	3	0
:	8	4	0



9.

2015 413
80% 517

2014 3 " 394 90%
78% 505 - 394 88%.

8,5% " 3 " 44 9.6%

100% 3- .410 .417
.50

100% 3-

. 127 . 128 .

						310			
		1 .	2 .	3 .	3 .	1 .	2 .	3 .	3 .
2013	89	47	28	12	2	1	0	0	0
2014	151	79	44	18	10	0	0	0	0
2015	127	72	31	16	8	4	1	1	2

2015 .,

2014 .

. 47

. 312

10.

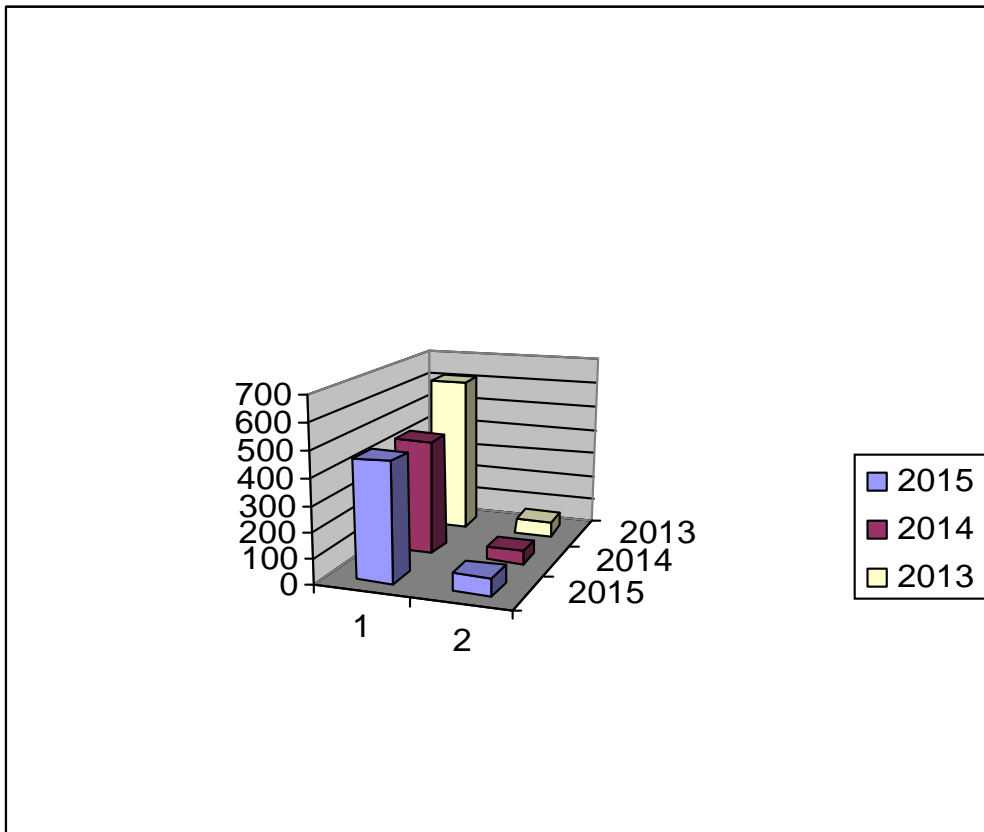
405 .

2015 .,

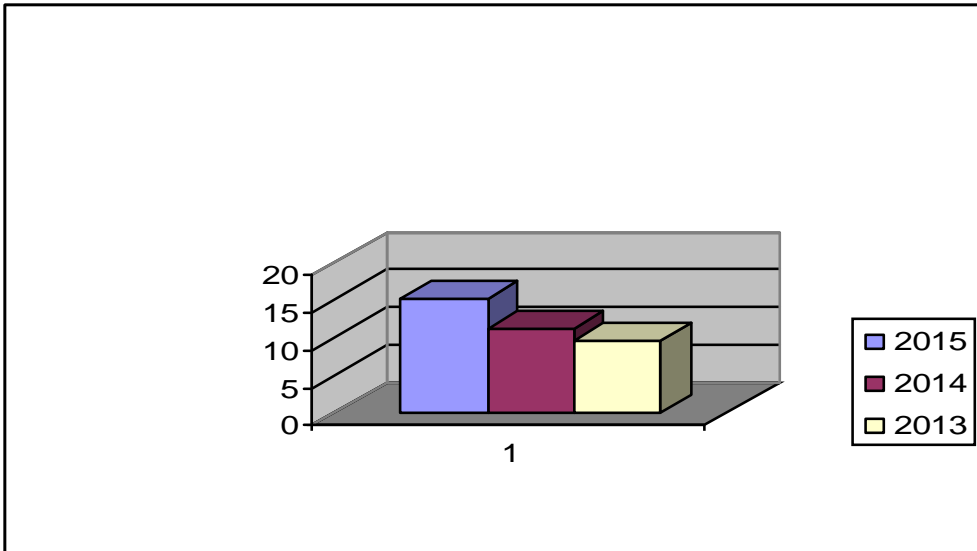
, 61 .

15%. 2014 .
 392 ., 42 .
 10.71%.

2015 . - 457 , 448 . 2014 .,
 , , .



2015
 , 28 , 19, 8 .
 .
 27 ., - 13 ., 2014 . 50,
 8 .



2015
- 61
- 28
41%.
27%
8
19
11%

2
- 35
51%

- 14
4
20%.
5.8%.
7
10%

2014 . 2015 . - 1
2013 . 2.

2015 .

V. (

2015) -
4
3
795
711

2015 16,56
22.08

14.81 ,

19,75 .
 21.54 , 11.58 .
 19.04 ,
 10.58 .

2013	1055	935	4	4	48	21,98	19,48
2014	883	810	4	4	48	18,40	16,88
2015	795	711	4	3	39	20,38	18,23

2014 4
 , 883 810 .
 2014
 18.40 ,
 18.40 .
 16.88 ,
 16.88 .
 21.04 ,
 15.75 .
 18.67 ,
 15.08 .
 2015
 2015 .
 ,
 ,

100% , , .

100% ,

50% , 50%

4,

4

8

V . . 250

2015 .

20 250 . 04.02.2014 .

20 . 2014

20 . 20

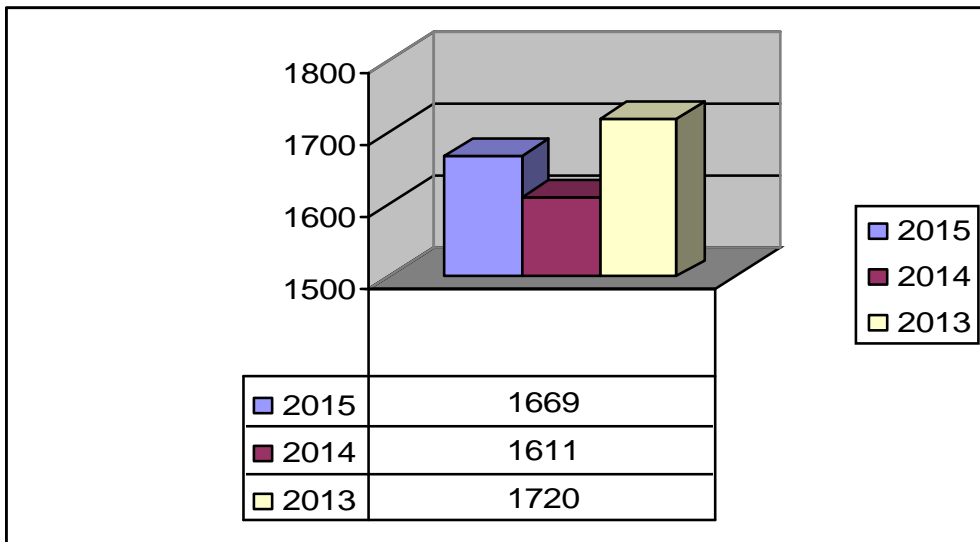
V I. . 250 .

2015 1170

2014 499 .

1082 539 . 1072

2013 638 .



2015 .

VI.

1. 2015

70

672 .

249 .

2015 .

742 ,

29,

220, 2

-

392 , 171

1

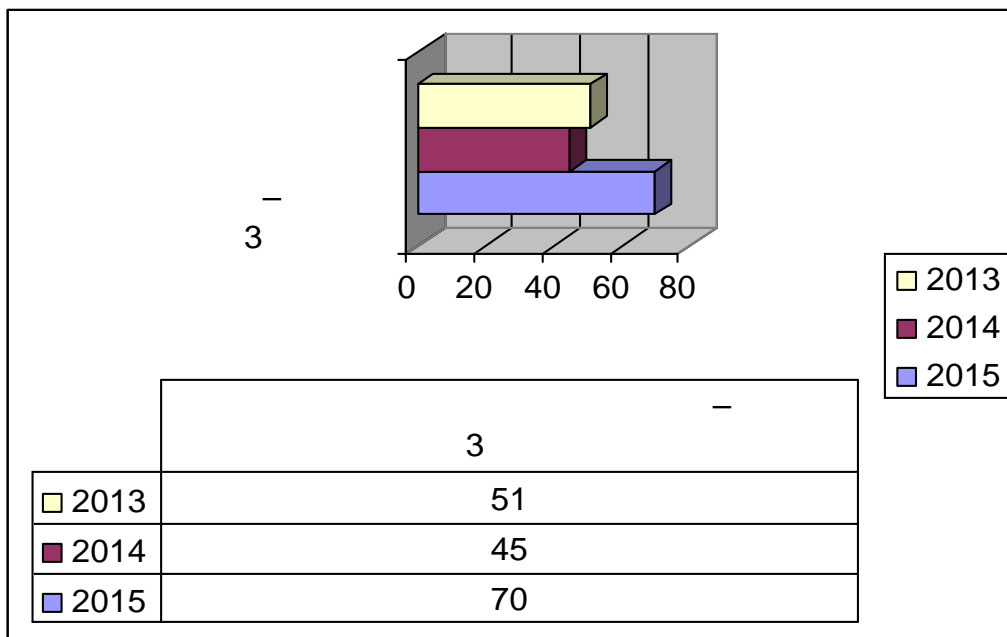
2

3

218 .

283

- 10



94 816.00 . -
 - 73 187.00 .,
 - 16 536.00 . ,
 - 4959.00 .

2015 . 9961 ,

2014 .,
 8534 2013 . 10 427 .

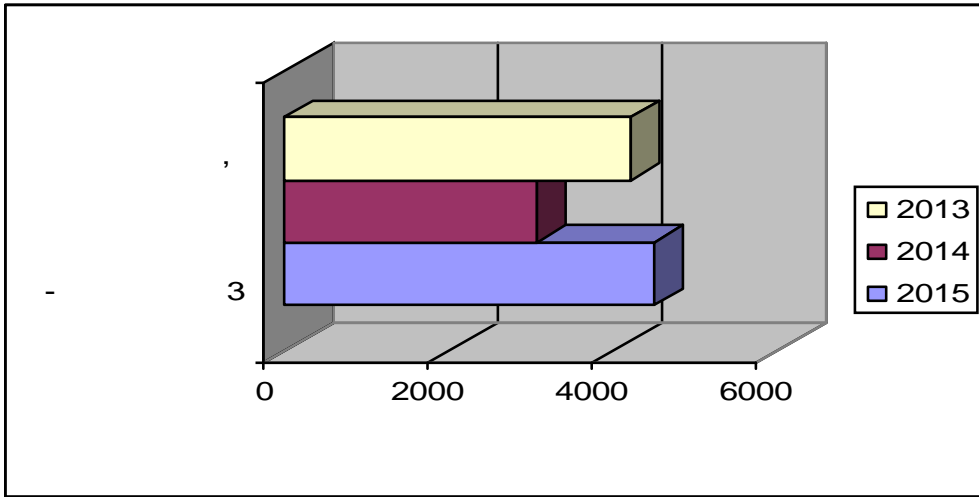
/

35 , 10 .

2015 ,

2015 .

8492, 6799 2014 . 7486
 2013 . - 4518
 2015 ., 3088 2014 ., 4218 2013 .



120 491 2014 133 101 2015 134 246 2013
 518 866 2015 68 694 290 2014 89
 2013 156 287 481
 2014 2015
 2015 1105, 2014 993 2013 1244
 2015 217, 2014 185 2013 215
 2015 1276 2014 1266 2013 1613
 2015 1830 2014 1817
 2013 983
 2014 1266 2013 1276
 2015 1613
 2001
 800
 ”



Microsoft Windows 7,

Microsoft Windows XP.

:

Microsoft Windows 7,
Microsoft Windows XP. Microsoft Office
2003, 2007 2010. ESET
NOD Endpoint 5,

2015 (5 -
) 2016
Gembird TP-Link TL-WR1043ND.

Dell 1420
WINDOWS 2003 SERVER;
Fujitsu Primergi TX2540M1,
2015, Dell Power Edge 2950
Fujitsu Primergi TX2540M1
2008 SERVER, WINDOWS
“ backup ”
2014

Toshiba Satellite L300,
web
2015
1 Tb NAS ZyXEL RAID 1. 2
backup ,
100%
FTP , Sharing

2 HED MC200; 2 BEHRINGER
 3 XM1800 M-Audio Firewire ,
 MSRS Recording System. 2015
 () 1, 5
 () .
 2013 Brother ADS 2100,
 Kyocera FS-1035 MFP
 Kyocera FS-1035 MFP
 Xerox 425 Work Centre Xerox M15i.
 2015
 Microsoft Windows XP,
 Microsoft Windows 7 8.1.
 „Web 5.0“ Web ;
 „Web - 66“
 „Style“

- JES-

2013

4.,

2008 .

01.10.2015

LawChoice,

WEB

2015

67

Facebook

